



780 Professional Drive N. Shreveport, LA 71105 Phone (318)-524-2270 Fax (318)-524-2297
www.highlifter.com

Polaris 800 Razor 01 Lift Kit Installation Instructions

INSTALLATION NOTES FOR 2011 MODELS:

On 2011 models the customer MUST upgrade to a HLP rear axle bar replacement kit (ABK-P-3) or upgrade the rear factory CV axles with HLP PRO SERIES axles or GORILLA axles!!! On 2011 models with a lift kit installed the rear axles bind when the suspension is at full extension/droop and are subject to break.

Read before Installation

This product is designed for use on ATVs and/or RUVs to increase ground clearance and fender clearance. Purchasers should be aware that use of this product may increase the frequency of required maintenance, part wear, and will raise the center of gravity on your ATV and/or RUV, increasing risk of roll-over, injury and death on all types of terrain. It is your responsibility to always inform other operators and passengers of this vehicle about the added risks.

High Lifter Products, products are designed to best fit users ATV/RUV under stock conditions. Adding, modifying, or fabricating any OEM or aftermarket parts will void warranty. High Lifter Products, products could interfere with other aftermarket accessories. If the user has aftermarket products on machine, contact High Lifter Products to verify that they will work together. Adding aftermarket suspension components and/or more aggressive tires can cause breakage of other OEM driveline components such as differentials, axles or drive shafts.

We recommend that wider tires and/or wheel spacers be used to achieve a wider stance and to improve stability of the ATV and/or RUV. Riders should be advised that the handling characteristics of a taller ATV and/or RUV are different and require extra care when riding, particularly on side hills or off-camber situations. If you further raise the center of gravity by adding taller tires, heavy loads to racks or seats, or by any other means, the ATV and/or RUV must be operated with even more care, at slower speeds and on relatively flat ground. All turns should be done at a slow speed, even on level ground.

Operation of an ATV and/or RUV with or without modified suspension components, while or shortly after consuming alcohol or drugs, subjects the rider to the risk of serious bodily harm or possible death. This risk is compounded if the rider does not wear an approved helmet and other safety gear. High Lifter urges that all approved safety gear be worn when riding an ATV and/or RUV as a driver or passenger.

By purchasing and installing High Lifter Products, products, user agrees that should damages occur, High Lifter Products will not be held responsible for loss of time, use, labor fees, replacement parts, or freight charges. High Lifter Products will not be held responsible for any direct, indirect, incidental, special, or consequential damages that result from any product purchased from High Lifter Products. The total liability of seller to user for all damages, losses, and causes of action, shall not exceed the total purchase price paid for the product that gives rise to the claim.

Dealers and other Installers

You are responsible for informing your customer and end user of the information contained above and the increased potential hazards of operating an ATV and/or RUV equipped with modified suspension components. If you install any suspension modifying components, it is your responsibility to also install the warning label prominently in view of the driver and in prominent view of the driver and passenger on RUVs and multi-passenger ATVs. They should also be instructed to notify anyone operating the vehicle, as well as any passengers, that said vehicle is modified.

As discussed above, it is critically important that they be instructed in the need for slower speed operation, regardless of terrain, after this lift kit is installed.

IT IS ALSO HIGHLY RECOMMENDED THAT 1.5" WHEEL SPACERS BE USED SO AS TO INCREASE THE WIDTH AND STABILITY OF THE MACHINE. HIGH SPEED MANEUVERS SHOULD BE AVOIDED WHEN THE MACHINE HAS BEEN LIFTED AND LARGER TIRES MOUNTED.

Parts Diagram

**Front Lift Bracket
(4ea)**



Rear Lift Bracket (4ea)



10mmx 110mm Bolt (2ea)



10mm x 70mm (12ea)



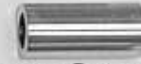
**10mm Lock Nut
(12ea)**



Small Spacer (2ea)



Medium Spacer (2ea)



**10mm Washer
(8ea)**

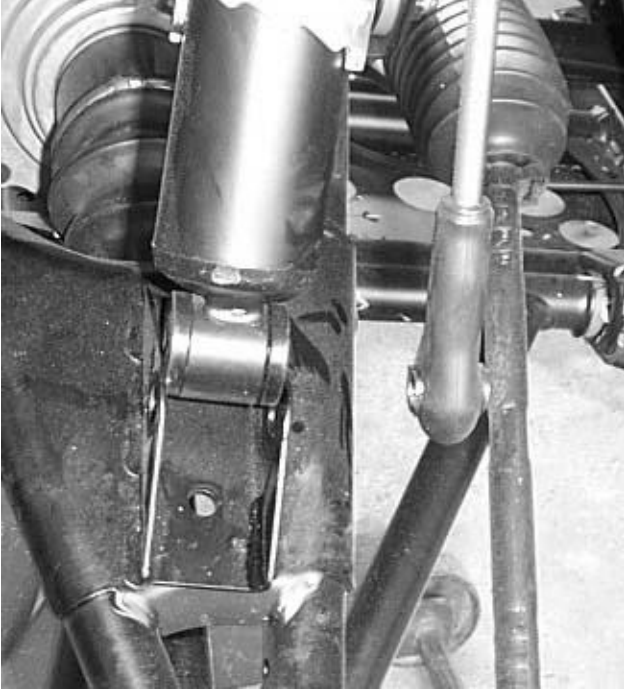


Large Spacer (2ea)



Front Lift Installation

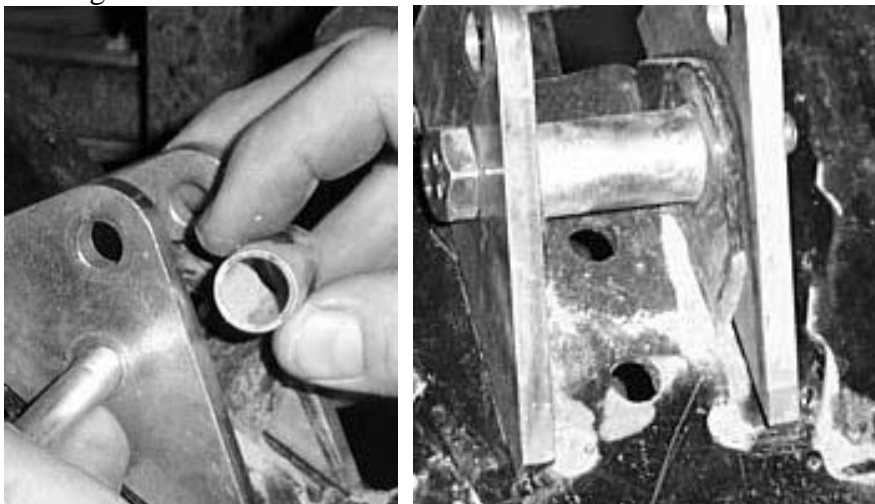
- 1) Place ATV transmission in park. Place jack under center of ATV front end and lift until front wheels clear the ground. Be careful to support ATV properly so that it is securely supported so that A-arms and shocks can droop to full extension.
- 2) Remove front wheels.
- 3) Remove the bottom of the front shocks, stabilizer rod, and small spacer.



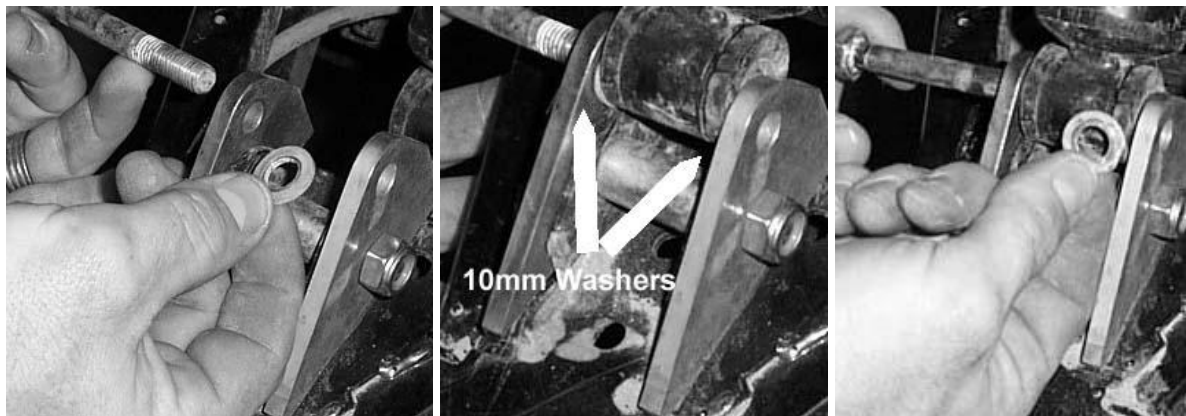
- 4) Place the front lift brackets onto the front shock mount. Make note of the angle on the bottom of the brackets. The angle helps to clearance any welds on shock mount tabs.



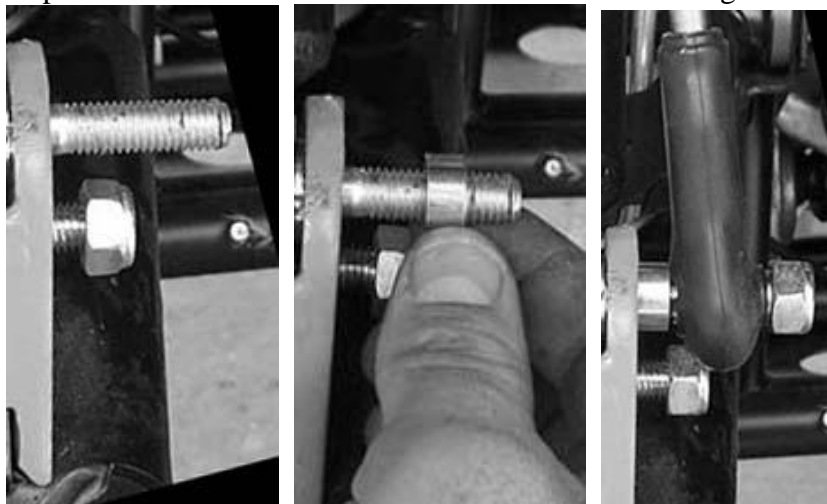
- 5) Insert the Large Spacer between the shock mount tabs. Connect the Front Lift brackets to the frame using the 10mm x 70mm hex bolts and 10mm lock nuts.



- 6) Next, insert the bottom of the shock into the top of the bracket. Place the 10mm flat washers inside of the bracket on either side of the shock.



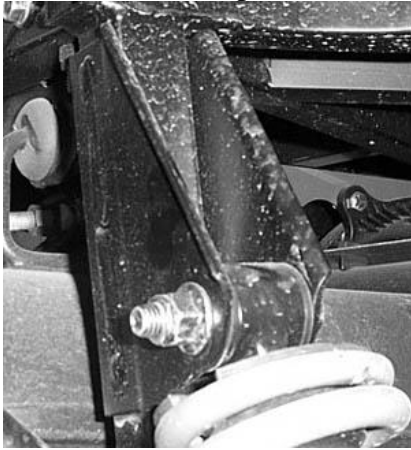
- 7) Insert the 10mm x 110mm hex bolt through the bracket and shock. Connect the stabilizer rod and spacer to the outside of the lift bracket and fasten using the 10mm lock nut.



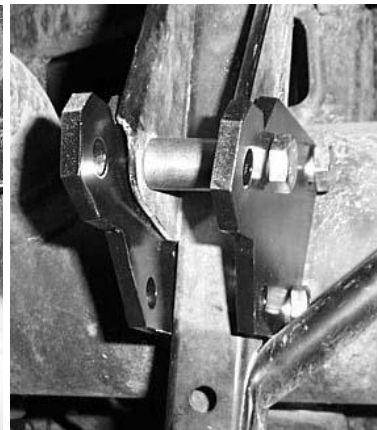
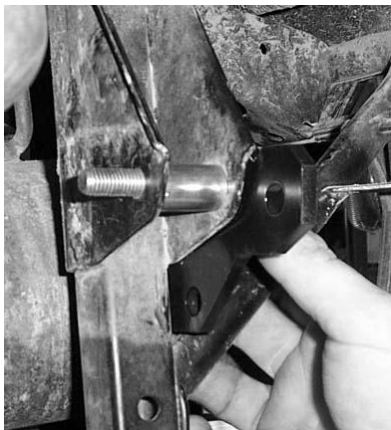
- 8) Repeat steps for opposite side.
9) Lower the jack and place the wheels back on the ATV.

Rear Lift

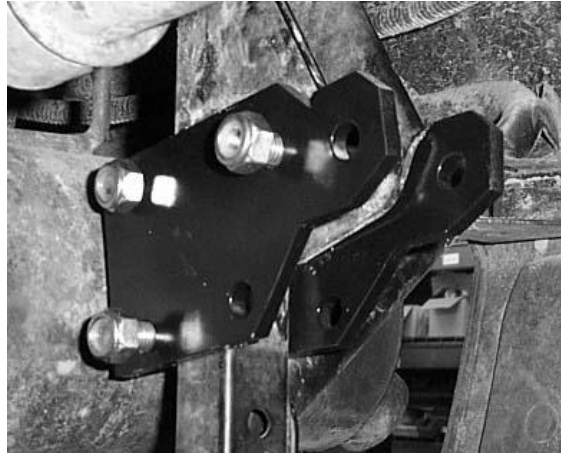
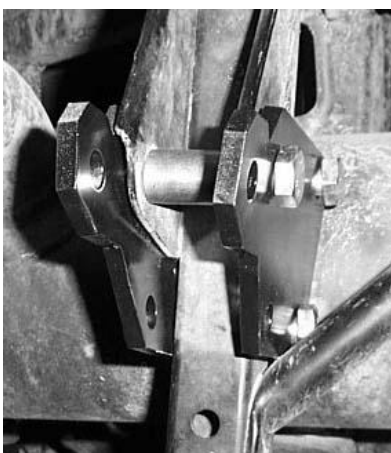
- 1) Place jack under ATV at the rear of the bottom skid plate and lift until the weight is off the suspension. Be careful to secure the ATV properly so as not to fall off the jack.
- 2) Remove the wheels.
- 3) Remove the top of the shock from the frame and jack the ATV up an additional 1"-2".



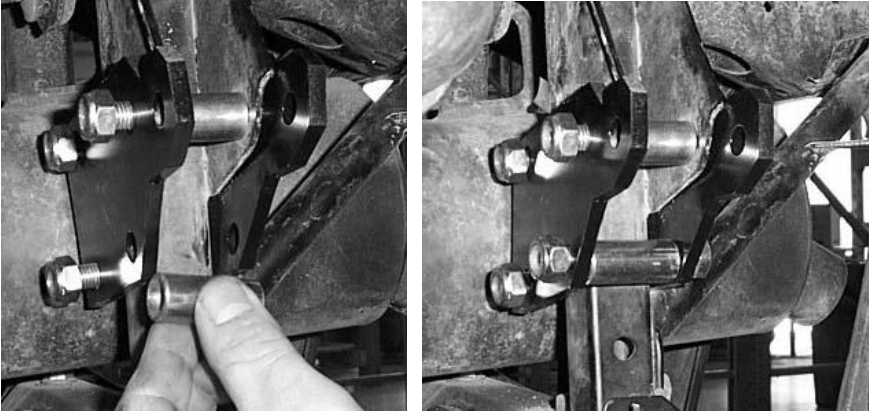
- 4) Place the rear lift bracket onto the frame and insert rear smaller spacer between the shock mounting tabs.



- 5) Finish connecting the back side of the rear lift bracket using 10mm x 70 mm bolts and 10mm lock nuts.



6) Next insert the large spacer between the two brackets for support. Secure it using one 10mm x 70mm hex bolt and 10mm lock nut.



7) Insert the top of the shock to the bottom of the bracket and fasten using the 10mm x 70mm hex bolt, two 10mm flat washers, and 10mm lock nut. Place the 10mm flat washer on both sides of the top shock, to the inside of the brackets and fasten tight with the 10mm lock nut.



8) Repeat this process on the other side.



9) Tighten all bolts to manufacturer's torque specifications. Install the wheels, torque wheel lug nuts to manufacturer's specifications, lower and remove jack. Check for clearance problems or misalignment.
10) Re-torque lug nuts after the first ride.

Thank You

For choosing





High Lifter Lifetime Warranty

From the beginning, High Lifter has engineered and manufactured some of the toughest, most durable products on the market. That's why this product comes with a Lifetime Warranty. It's our promise that High Lifter will never let you down.

- The **Lifetime Warranty** covers products sold to the original purchaser only and is not transferable. The term of the warranty is for the lifetime of the vehicle in question.
- Normal wear and tear items and finishes, such as, but not limited to: Heim joints, tie rod ends, ball joints, bearings, seals, bushings, bushing sleeves, zinc plating , powder coating, or chipping and discoloration of any finish is not covered.
- High Lifter will ship the replacement product after the returned product has been inspected by High Lifter staff.
- The warranty shall not include claims for damages, installation time or labor charges, economic losses, inconvenience, transportation, towing, down time, direct or indirect or consequential damages or delay resulting from any defect.
- The warranty does not apply to products that have been improperly applied or improperly installed.

Making a warranty claim

1. All claims must be accompanied by the part and the original sales receipt or other acceptable proof of purchase from the original owner.
2. All warranties must be accompanied with a Return Merchandise Authorization (RMA) number. (Contact High Lifter at 318-524-2270 or 800-699-0947 for an RMA number)
3. When shipping the damaged product:
 - a. Write the RMA number on the outside of the box.
 - b. Also include the RMA number, proof of purchase and any notes inside the box.
 - c. Please keep your tracking number and shipment information.
4. The customer is responsible for shipping the product to High Lifter--return shipping within the lower 48 states will be paid by High Lifter products. With all warranty claims, only standard shipping services apply.
5. High Lifter will process your order within 24 business hours of receiving the returned item.
6. **Ship to:** High Lifter Products, 780 Professional Drive North, Shreveport, Louisiana 71105