



FALCON RIDGE

Instructions for Installation and Care of Yamaha Wolverine RMax4 Soft Door Kit

52-10255-Z Yamaha Wolverine RMax 4

CAUTION: Do not smoke inside the cab or expose the enclosure to direct flames. Product is **FLAMMABLE**.

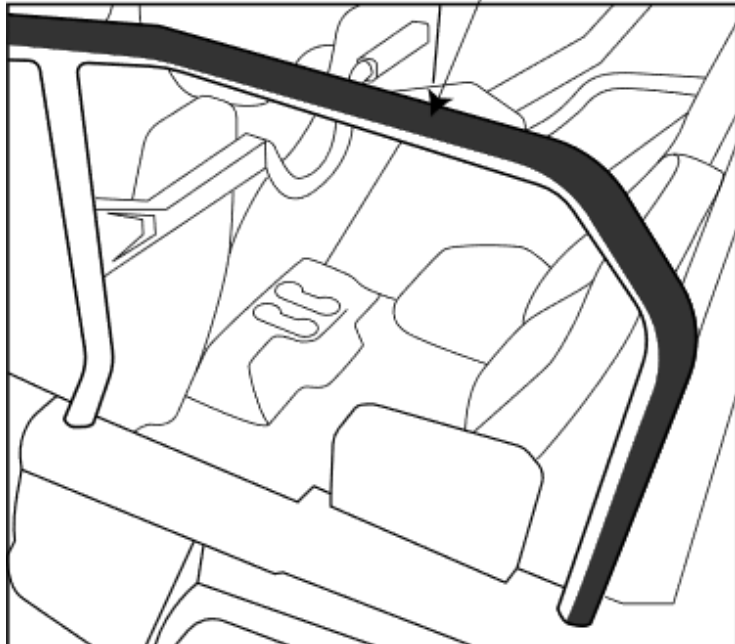
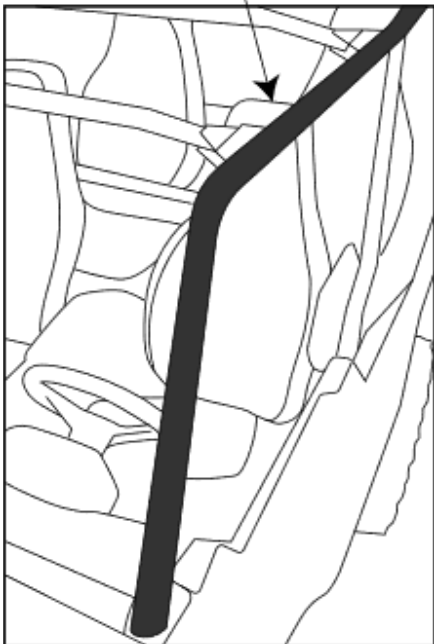
Be sure to read these instructions thoroughly before opening and installing the enclosure. The installation is best done when ambient temperature is 70°F or warmer. If installed in cold weather, warming the adhesive Velcro strips before installation is recommended.

Carefully open the carton and remove the rolled-up cab enclosure on a large flat surface that is clean and free of dirt or other material that may soil or scratch the windows of the Cab.

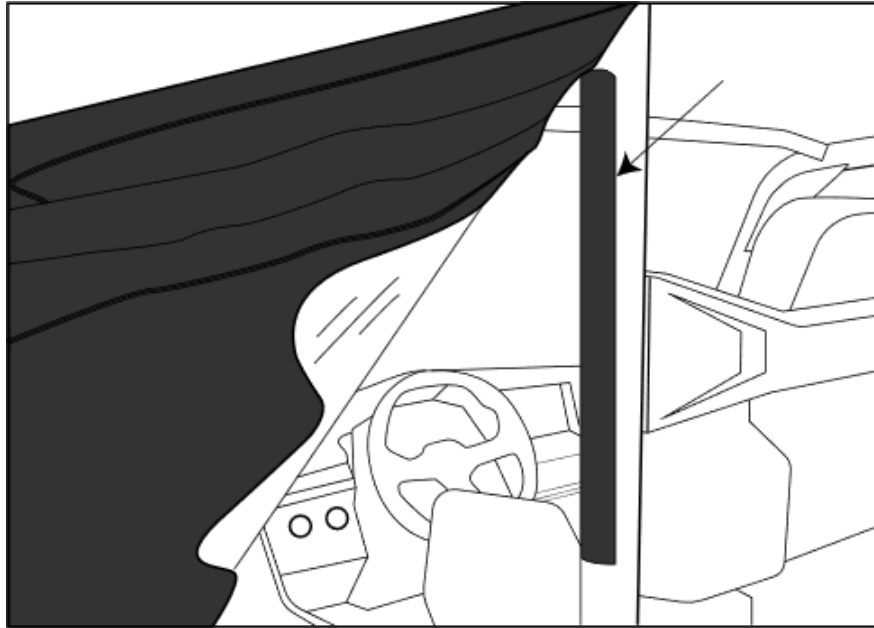
If any parts are damaged or missing, please contact customer service at (606) 845-7439.

1. Hook and Loop Attachment (Driver Side)

Cut and attach hook and loop to roll cage as shown.



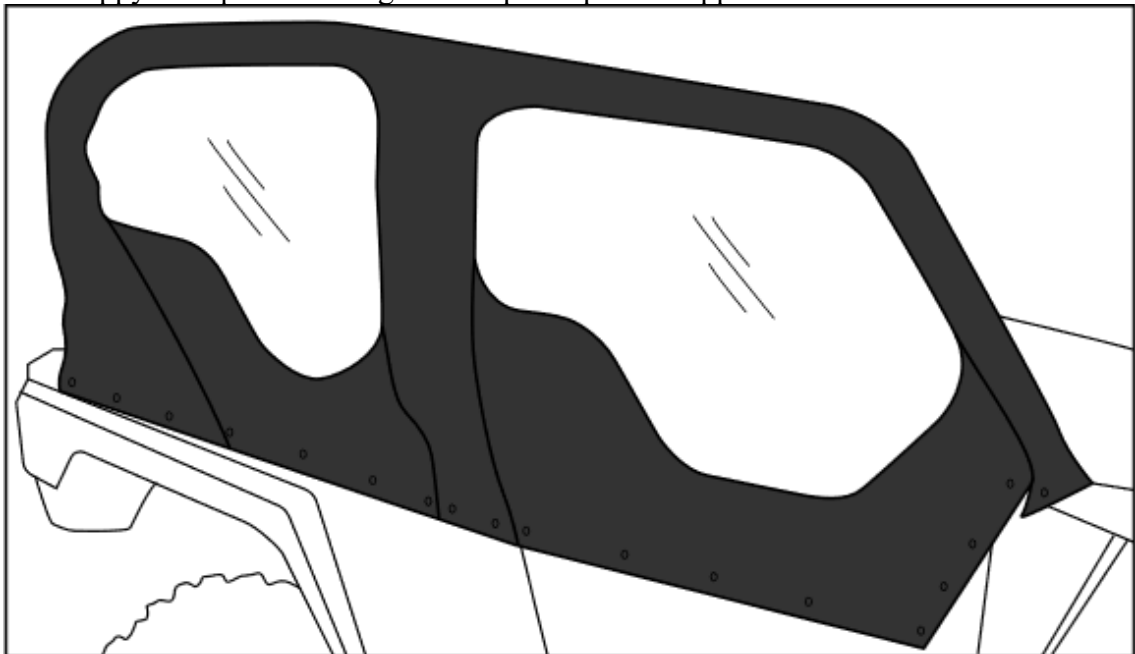
Attach to the outside of the B-Pillar.



Repeat on the opposite side of the machine and wait 15 mins for the adhesive to adhere.

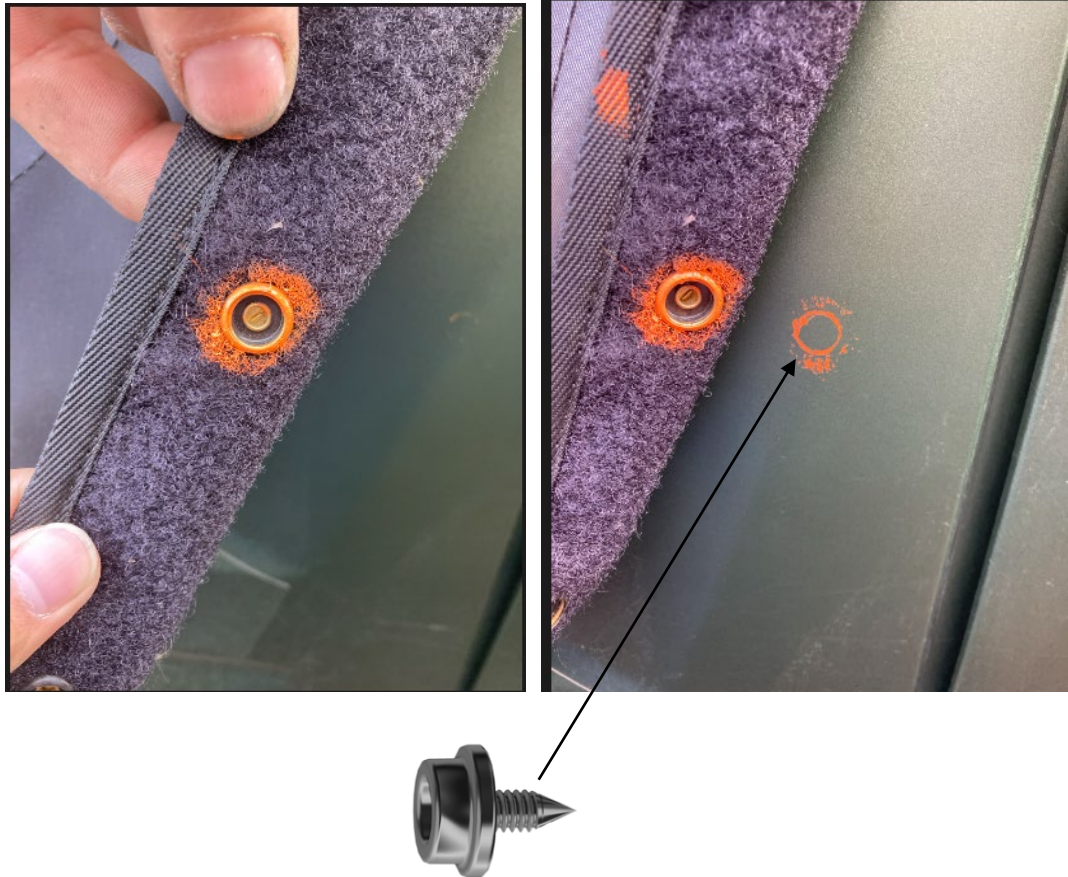
2. Align Door

Place the soft door onto the machine, loosely securing straps and align to the machine. Once happy with placement tighten straps. Repeat on opposite side



3. Snap Installation Only

For best results Outline Snap with a paint marker or chalk, press the snap onto the body to mark location. Install the provided snap and secure the soft door to the snaps. Repeat for all remaining snaps.



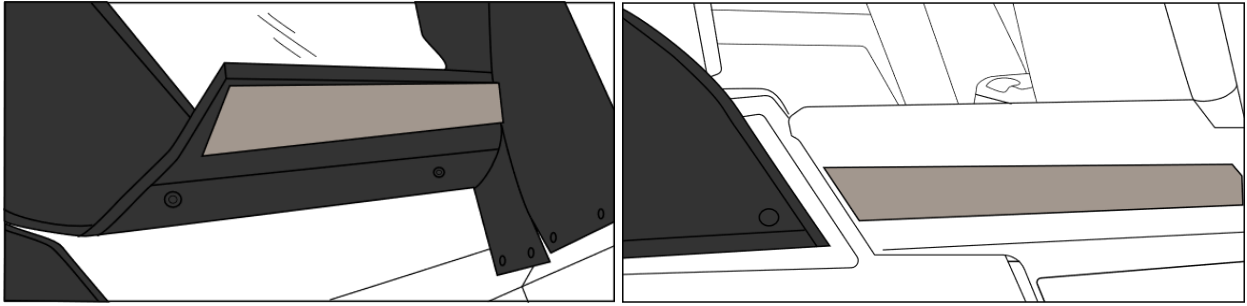
4. Hook and Loop Body Installation Only

Cut and secure hook and loop to the inside of the soft cabs lower section(s). Peel off the backing from the hook and loop. Fold flap down and firmly press along area where the hook and loop is installed.

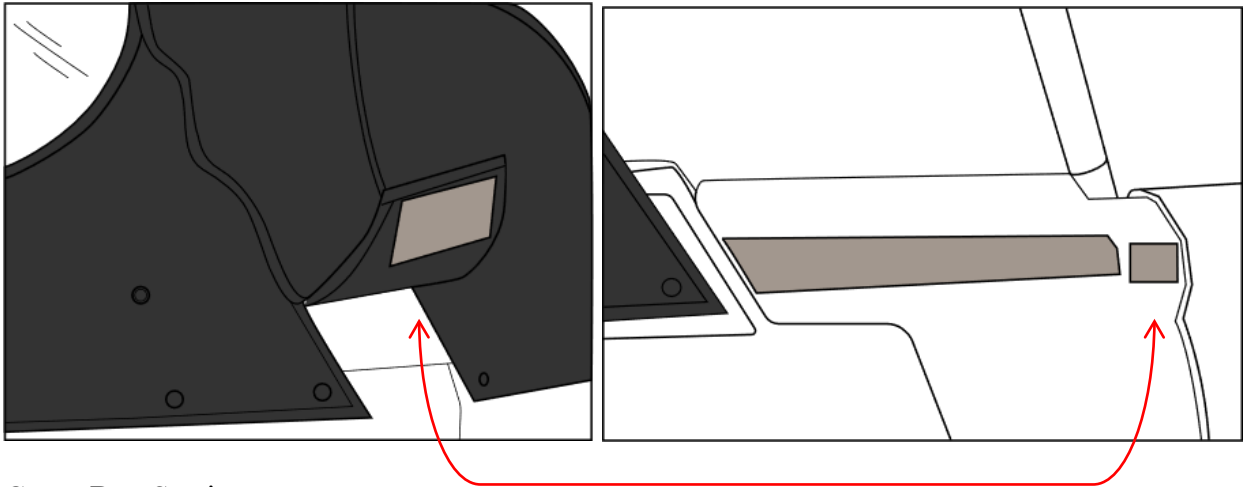
Wait 15 mins for the adhesive to adhere to the machine.

Carefully open the flaps, separating the hook and loop from the plastic. Apply more pressure to the hook and loop on the plastic panels if needed.

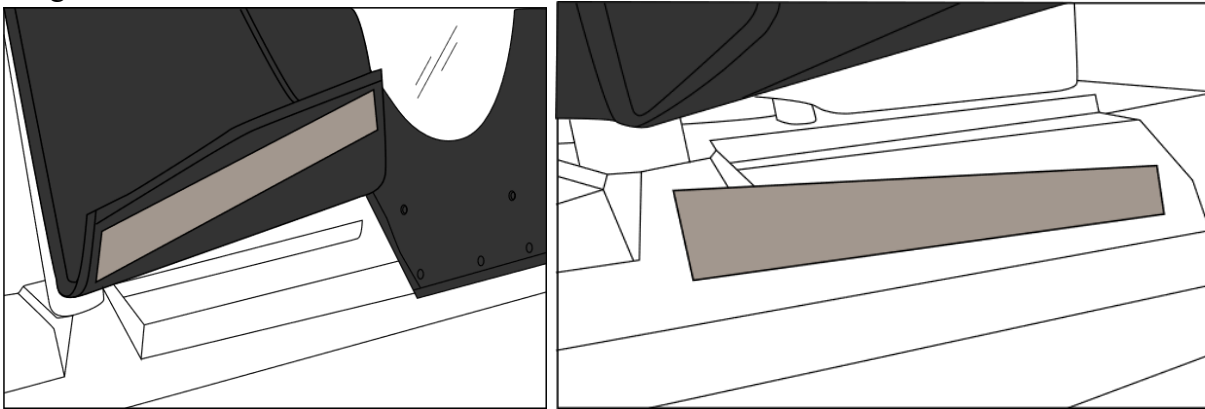
Rear Section



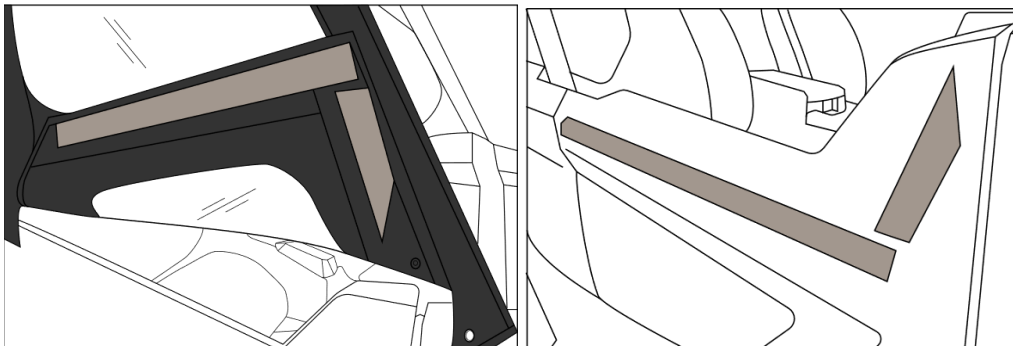
Middle Section



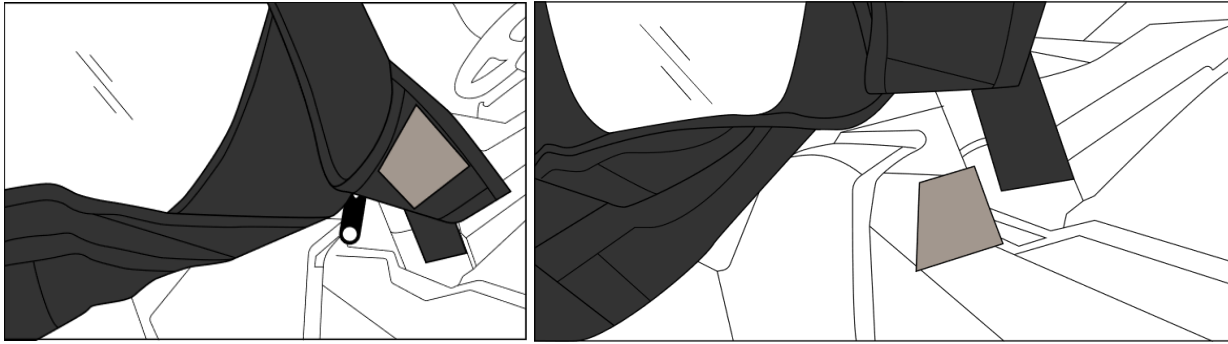
Cargo Box Section



Front Section



Near Lower Part of A-Pillar



Cleaning and Storage Recommendations:

1. Before removing the Falcon Ridge for storage, make sure it is very clean in order to prevent scratching of the window panels. Clean with a soft rag or sponge using a mild liquid detergent soap and warm water solution. Never rub the windows with a dry cloth or rag! Let the Cab dry thoroughly before attempting to roll for storage.
2. It is important that the Cab be rolled up for storage rather than folding. Folding will cause damage to the windows!!! Carefully roll up the Cab similar to the way it was when it was packed at the factory. On a large, clean and flat surface, fold the doors over the rear panel first, then, interleave the top and windshield on top of the doors. Begin rolling the Cab into a roll approximately 8 inches in diameter. Put the rolled Cab back into the carton for storage at a normal room temperature. It is best not to expose the Cab to either extreme hot or cold temperatures when storing.

Warranty

To The Owner of this Product:

Thank you for purchasing one of our Falcon Ridge Cab Enclosures, Tops &/or Windshields!
Below are the terms under which your product is covered under our manufacturer's warranty.

30 Day Warranty which includes and is not limited to replacing the enclosure, tops and/or windshield due to defect of the product. Please refer to the return policy in this case for more information.

1 Year Warranty includes any defect in material or workmanship within this time frame we will gladly correct the problem or replace the enclosure, tops &/or windshield. Upon submitting for the correction or replacement we will need to receive pictures of the defect in material or workmanship along with the receipt from the date of purchase.



WARNING: This product contains a chemical known to the State of California to cause cancer. For more information, go to www.P65Warnings.ca.gov.