

High Lifter Products, Inc
780 N Professional Drive
Shreveport, LA 71105



318-524-2270
Fax 318-524-2297

Polaris 425 Expedition/ 500 Magnum Lift Kit Installation Instructions

Read Before Installation!

This product is designed for use on ATVs on which additional ground clearance and fender clearance is desired. It is designed for utility type, slower-speed use on relatively flat terrain in deep mud or snow. Although we have many thousands of satisfied lift kit customers and over 400 franchised dealers selling and installing lift kits, purchasers should be aware that use of this product may increase the frequency of required maintenance, part wear, and will raise the center of gravity on your ATV increasing risk of roll-over on side hills, ditches or other steep terrain.

We recommend that wider tires and/or wheel spacers be used to achieve a wider stance and to improve stability of the ATV. Riders should be advised that the handling characteristics of a taller ATV are different and require extra care when riding on side hills or off-camber situations. If you further raise the center of gravity by adding heavy loads to racks or seats, the ATV must be operated with care, at slower speeds or on relatively flat ground.

Operation of an ATV with or without a lift kit, while or shortly after consuming alcohol or drugs, subjects the rider to the risk of serious bodily harm or possible death. This is compounded if the rider does not wear an approved helmet and other safety gear. High Lifter urges that all approved safety gear be worn when riding an ATV.

If this is not what you expected, or is not consistent with your intended use, you should return the product immediately to the seller, before installation, for a refund of the purchase price; less any fees. After installation, product is warranted for 90 days for defects in workmanship and materials. Warranty is limited to refund of the purchase price or replacement of the kit, at the seller's option.

This lift kit contains the following parts:

10mm x 65mm Bolt	1	Lift Brackets	8
8mm x 50mm Bolt	1	Pages of Diagrams	2
10mm Nylon Nut	1	Pages of Instructions	2
8mm Flat Washer	1		

WARNING: The McPherson struts on the front of this ATV are preloaded and are under extreme pressure. A spring compressor is required for the installation. Most local auto parts stores carry

spring compressors for around \$25 for a very basic model. If you do not have experience working with this type of tool, we strongly recommend that an authorized factory dealer install this lift kit.

Front Lift

- 1) Place jack under center of ATV front end and lift until front wheels clear the ground. Be careful to support ATV properly so that it is secure, but so that the A-arms and shocks can drop about 2”.
- 2) Remove front wheels and boot guards.

Warning: In the next step DO NOT let the A-arms drop to full extension. You can use a jack stand to limit downward travel. If you allow the A-arms to drop to full extension, the axle will possibly come out of the hub. If this happens, you will spend two more hours fixing this. For those of you that got ahead of yourself and are already facing this dilemma, don't panic. Get a Polaris repair manual or have your local Polaris dealer correct this problem.

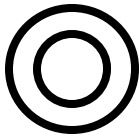
- 3) Using a spring compressor, compress the front springs. Take the top nut off, loosen the bottom two bolts on the strut housing and slide the strut cartridge and spring out. **Tip:** (When sliding the strut out, be sure it is completely collapsed. This will make it easier to get out.) **For the Novice:** When you first start to pull the strut out it will want to extend. Once several inches of the bottom shaft are exposed, you can hold the bottom and push the top back down. You may have to do this several times in order to get the strut out of the socket.
- 4) Drop bracket “A” into the bottom of the strut socket and place bracket “B” on the top lip of the strut housing.
- 5) Place the factory washer over bracket “B” and slide the strut back into the socket. You may need to use a screwdriver between the springs to push the bottom of the strut down into the socket.
(Note: Make sure the bottom of the strut is resting on the top of bracket “A”. You can feel bracket “A” from underneath, to verify it's touching the bottom of the strut. DO NOT put your finger up into the hole.)
- 6) Tighten the bottom two bolts on the housing and reinstall the top nut on the top of the strut. (Be sure to reattach the brake line to the top bolt if you took it off.)
- 7) After all bolts have been tightened, loosen and remove the spring compressor.
- 8) Repeat this process on the other side.
- 9) Install the wheels, torque wheel lug nuts to manufacturer's specifications, lower and remove jack. Check for clearance problems or misalignment.

Rear Lift

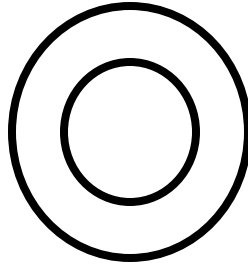
- 1) Place jack under ATV at the rear of the bottom skid plate (NOT THE DIFFERENTIAL) or in the center of the ATV, and lift until the weight is off the rear suspension. Be careful to secure the ATV properly so as not to fall off the jack.
- 2) Disconnect the bottom of the rear shock from the differential. (The lift can be installed with the top of the shock on, but this can make it more difficult to align the lift bracket.)
- 3) After removing the shock, jack the ATV up an additional 1"-2".
- 4) **Note:** (All references to the side of the ATV are as if you are sitting on the ATV). Remove the Factory bolt directly behind the shock mount, on the axle, from the differential housing.
- 5) Place bracket "E" on the left side of the shock mount (short edge pointing upwards) on the axle, then spacer "C" on the right side of the differential housing, and then on the right side of spacer "C" place the bottom (rounded edge) of bracket "D". Secure the brackets to the shock mount with the Factory Bolt and Nut.
- 6) Secure the rear bolt hole on bracket "E" to the differential with a new 8mm x 50mm Bolt and 8mm Washer.
- 7) Last, place bracket "F" between the bottom of the shock eyelet ears, place bracket "E" between the inside of the bottom of the shock eyelet and bracket "F", then place the top (squared end) of bracket "C" on the outside of the bottom of the shock eyelet ears. Secure the brackets with the 10mm x 65mm Bolt and 10mm nut.
- 8) Tighten all nuts and bolts to Factory specifications.
- 9) Install the wheels, torque wheel lug nuts to manufacturer's specifications, lower and remove jack.
- 10) Check for clearance problems or misalignment.

Parts List

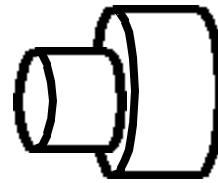
Bracket- "A" (2)



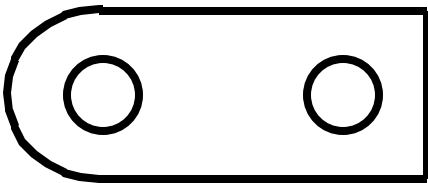
Bracket- "B" (2)



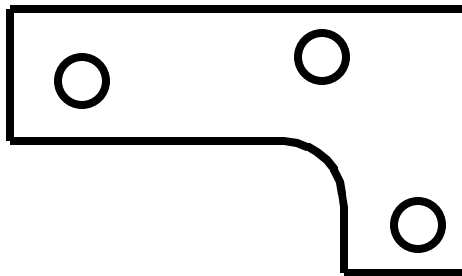
Bracket-"C" (1)



Bracket-"D" (1)



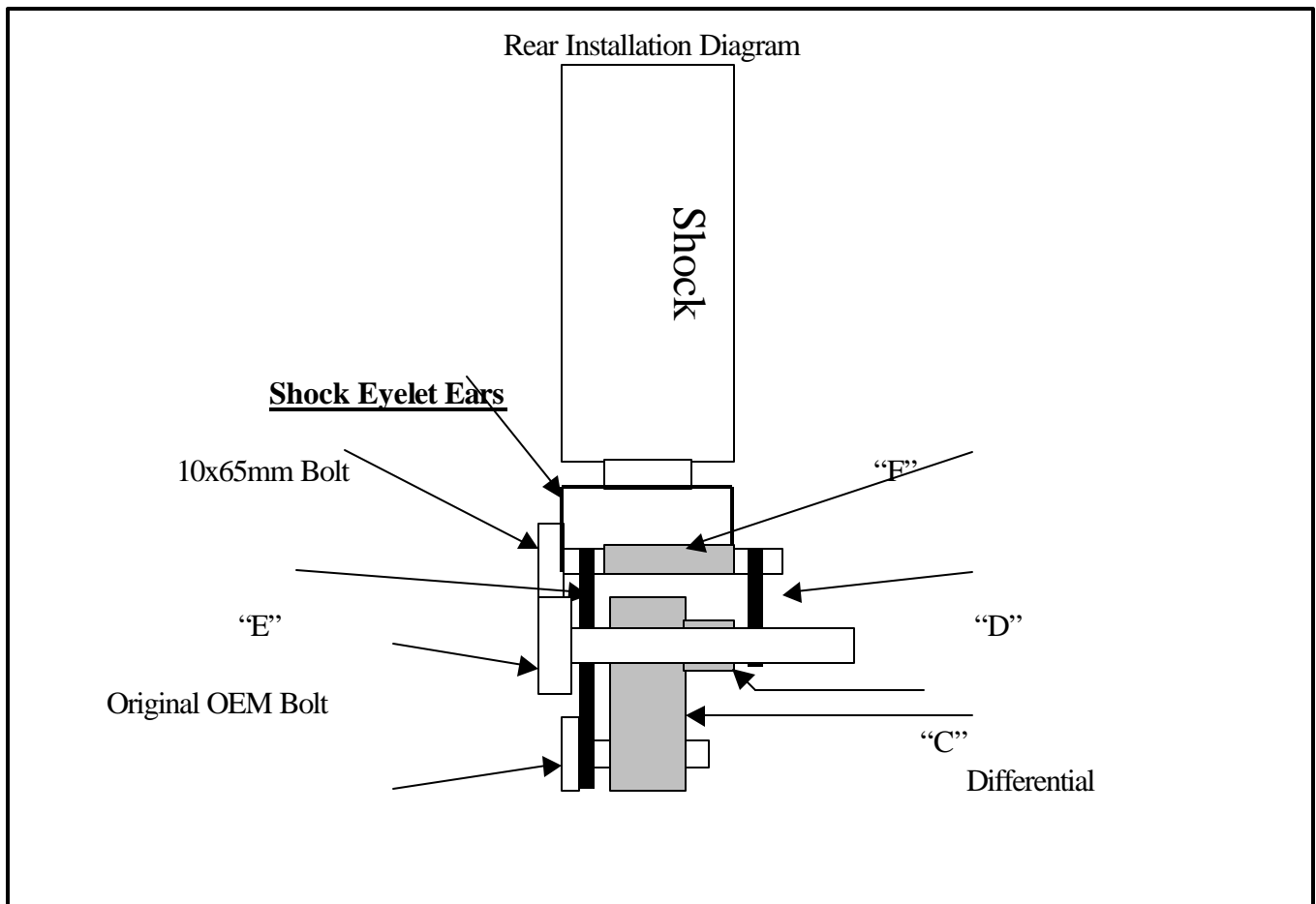
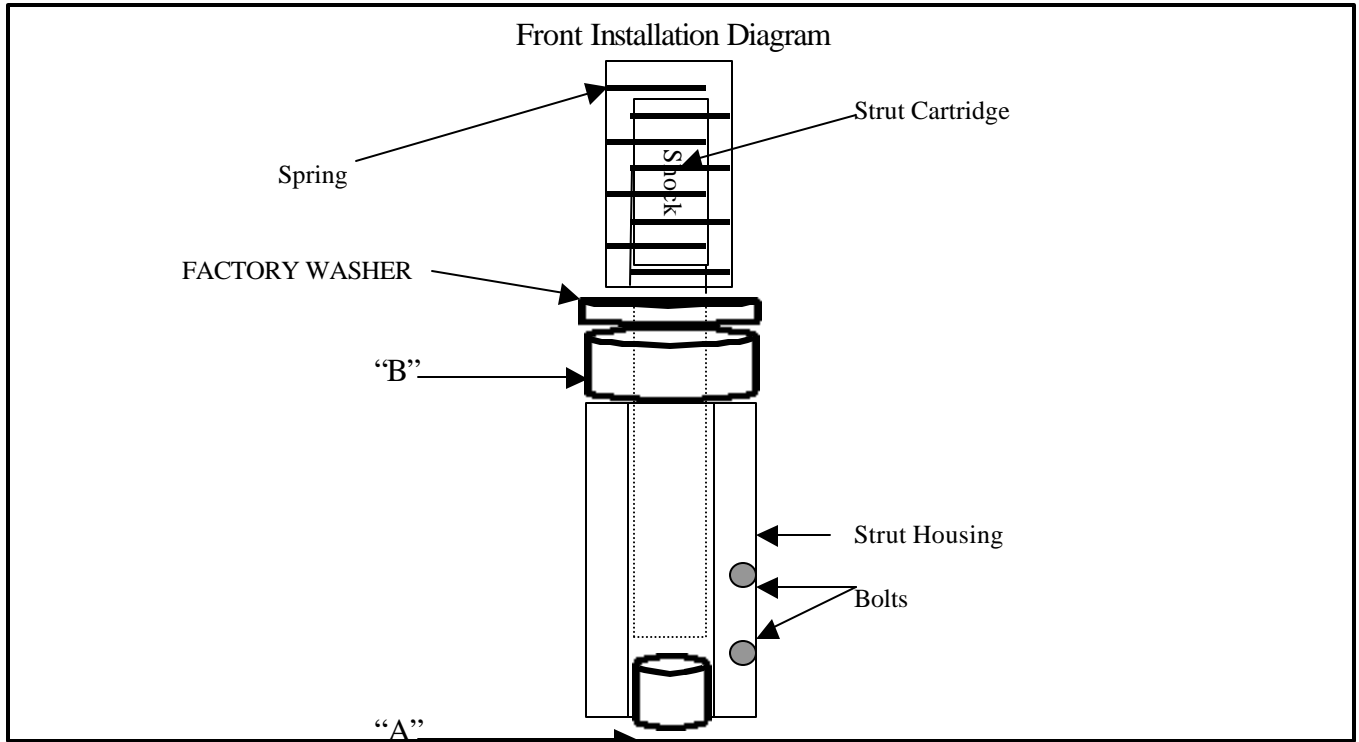
Bracket-"E" (1)



Bracket-"F" (1)



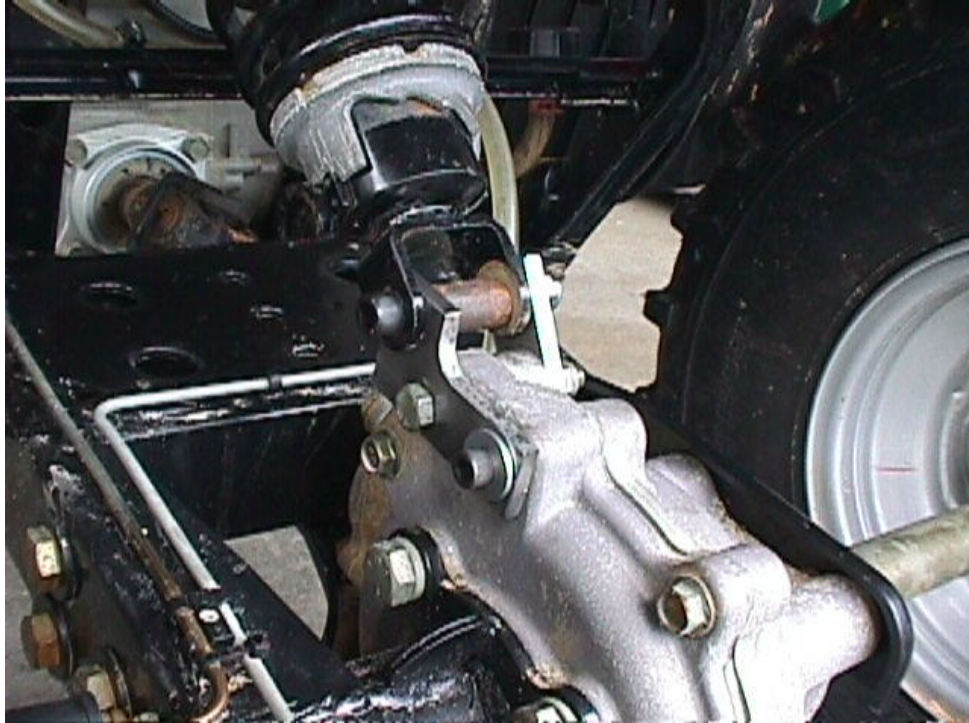
Installation Diagram



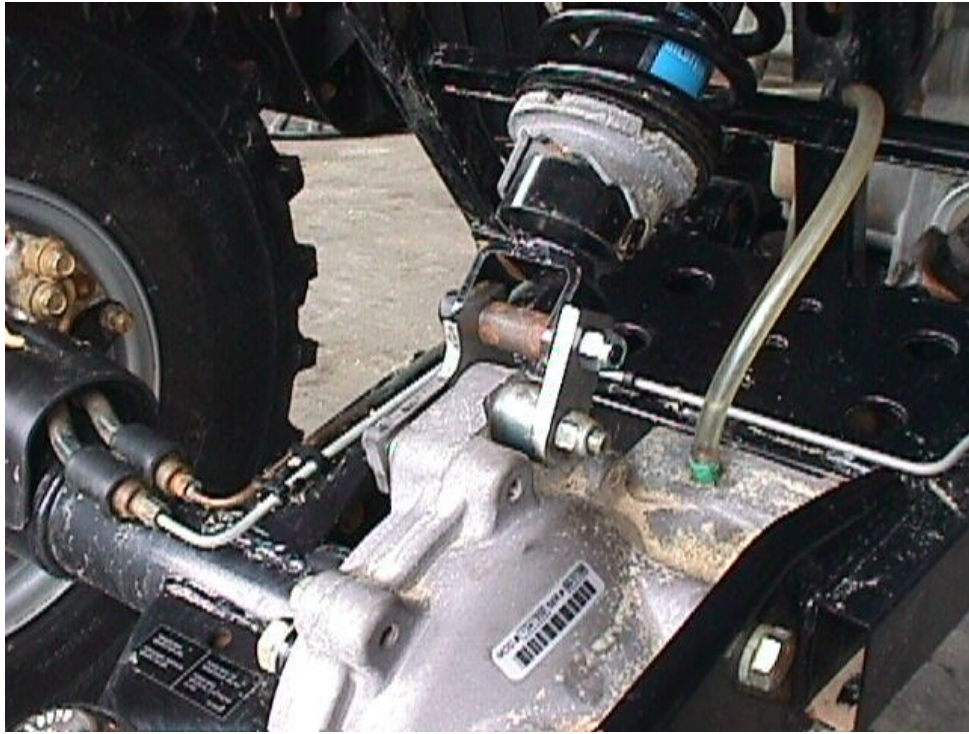
8x50mm Bolt

Picture Installation Diagram

Rear Picture Installation Diagram (Left Angle)



Rear Picture Installation Diagram (Right Angle)



Rear Picture Installation Diagram (Assembled)

