

NOTES:

High Lifter Products, Inc.
780 Professional N Dr.
Shreveport, LA 71105



(318) 524-2270
Fax (318) 524-2297

Arctic Cat 300 2x4, 4x4 Lift Kit Installation Instructions

Read before Installation

This product is designed for use on ATVs on which additional ground clearance and fender clearance is desired. It is designed for utility type, slower-speed use on relatively flat terrain in deep mud or snow. Although we have many thousands of satisfied lift kit customers and over 400 franchised dealers selling and installing lift kits, purchasers should be aware that use of this product may increase the frequency of required maintenance, part wear, and will raise the center of gravity on your ATV increasing risk of roll-over on side hills, ditches, or other steep terrain.

We recommend that wider tires and/or wheel spacers be used to achieve a wider stance and to improve stability of the ATV. Riders should be advised that the handling characteristics of a taller ATV are different and require extra care when riding on side hills or off-camber situations. If you further raise the center of gravity by adding heavy loads to racks or seats, the ATV must be operated with care, at slower speeds or on relatively flat ground.

Operation of an ATV with or without a lift kit, while or shortly after consuming alcohol or drugs, subjects the rider to the risk of serious bodily harm or possible death. This is compounded if the rider does not wear an approved helmet and other safety gear. High Lifter urges that all approved safety gear be worn when riding an ATV.

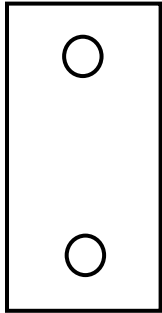
If this is not what you expected, or is not consistent with your intended use, you should return the product immediately to the seller, before installation, for a refund of the purchase price; less any fees. After installation, product is warranted for 90 days for defects in workmanship and materials. Warranty is limited to refund of the purchase price or replacement of the kit, at the seller's option.

This lift kit contains the following parts:

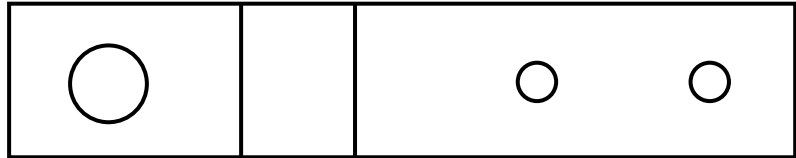
10x45mm Bolts	8
¼" x ¾" Bolt	2
10mm Nuts	8
¼" x 1 ¾" Bolt	4
¼" Nut	6
Lift Brackets	10
Spacers	8
Pages of Instructions	8

Parts List

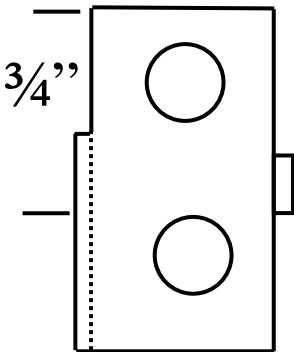
“A” - 2



“B” - 2



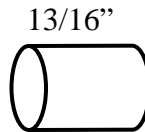
“C” - 2



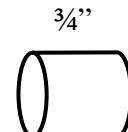
“D” - 4



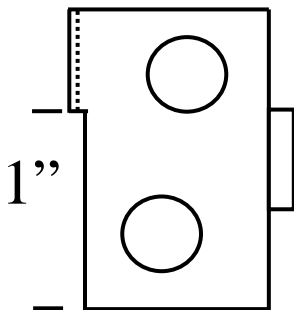
“E” - 2



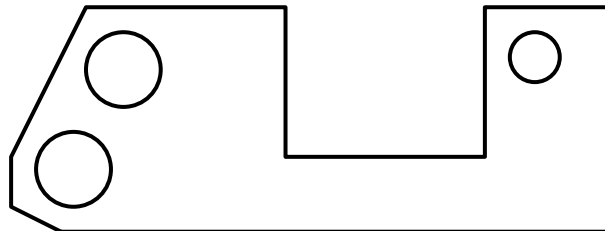
“F” - 2



“H” - 2



“G” - 2



Arctic Cat Product Line Up

Lift Kit – Generates 1.5” – 2” of additional Ground Clearance.

Outlaw Tires-

- 25x9.50x12
- 25x12x12
- 26x10x12
- 26x12x12
- 27x9.50x12
- 27x12x12
- 28x9.50x12
- 28x10.5x12
- 28x12.50x12



ITP Steel/Aluminum Wheels.

Wheel Spacers

High Performance Kit – Delivering you 15% MORE POWER!

- SuperTrapp IDS-2 Quiet Series Exhaust
- K&N Air Filter – 1 Million Mile Warranty!
- K&N Filter Care Kit – Recharges and Cleans Air Filters
- Dyno-Jet Jet Kit
- Outerwear’s Pre-Filter- Does Not Block the Flow of Air. Water Resistant!
- NGK Platinum Tip Spark Plug

Heat Fighter Kits

- Liquid Cooled and Air Cooled

Lighting Kits

Radiator Washers

Much Much MORE!

Multi-Seal Tire Sealant

- Plugs Holes Up to 1/2” in Tread and 1/4” in Sidewall

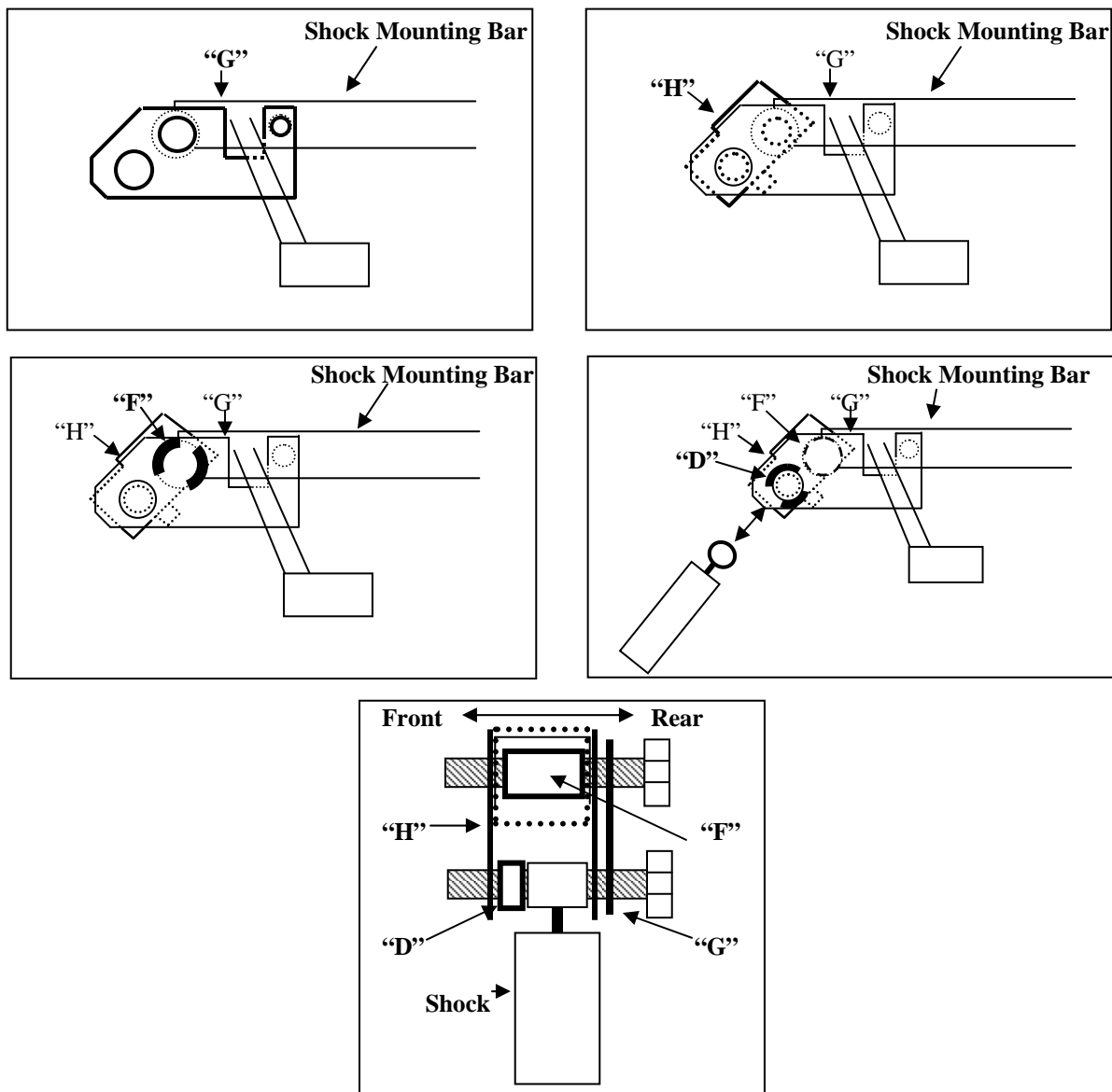
**ALL PRODUCTS CAN BE PURCHASED
SEPARATELY**

FINANCING NOW AVAILABLE!

Rear Lift

- 1) Place jack under the center of the ATV not the differential and lift until the weight is off the suspension. Be careful to secure ATV properly so as not to fall off the jack.
- 2) Remove wheels and top of shocks.
- 3) Place bracket "G" behind shock mounting bar using a 1/4" x 3/4" Bolt and 1/4" Nut. (see picture)
- 4) Place bracket "H" with large 1" notch facing down and outward on the OEM shock mount, placing spacer "F" on the inside of the OEM shock mount. Secure bracket "H" and spacer "F" with a 10x45mm Bolt and 10mm Nut, **do not tighten!**
- 5) Place top of shock eyelet inside of bracket "H" and spacer "D" between the front of the shock eyelet and the inside of bracket "H". Secure the shock eyelet and spacer "D" to bracket "H" with a 10x45mm Bolt and 10mm Nut.
- 6) Next, ensure the angle of the shock is the same as the manufacturer's original angle, and tighten all bolts to required torque specifications.
- 7) Check for clearance problems or misalignment.

Rear Installation Diagram

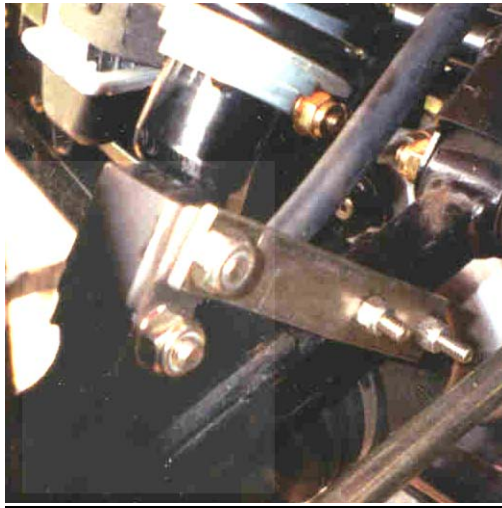


Note: VERY IMPORTANT

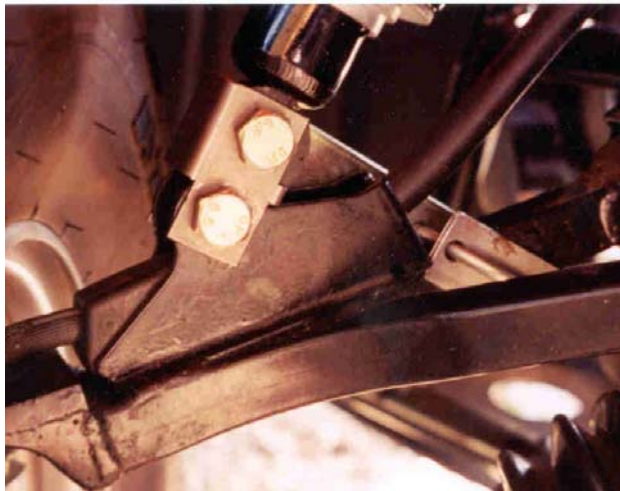
After installing front and rear lift you may notice that with the shocks “unloaded”, when you first lower the jack, your front-end alignment may look out of adjustment. After assuring that everything is tight and there are no clearance problems, ride the ATV a short distance to “reload” the suspension. Check the front-end alignment. Many ATV’s we have lifted need no adjustment, however with Artic Cat’s in particular you need to check, and if needed adjust toe in/out per the Owners Manual specifications. If it is out of adjustment it will affect handling and tire wear.

Front Lift

Front Left Installation (Rear View)



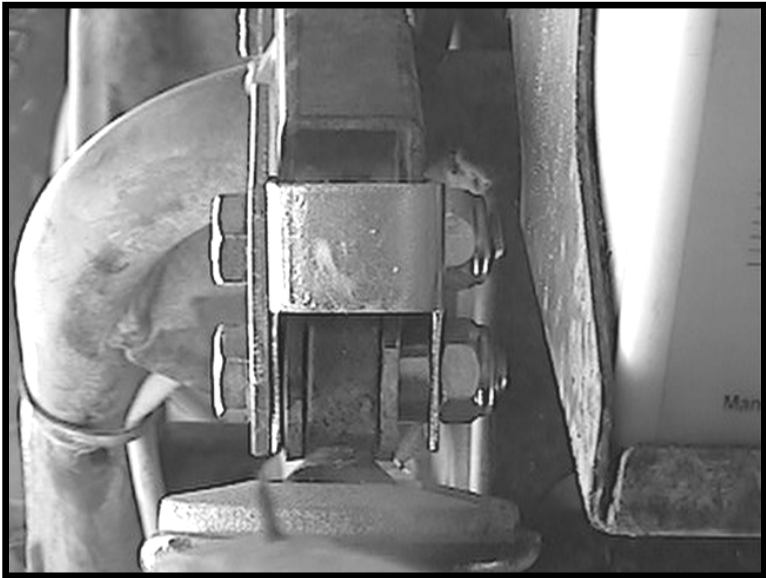
Front Left Installation (Front View)



Rear Installation (Rear View)



Rear Installation (Side View) (From Right Side of ATV)



Before

After



